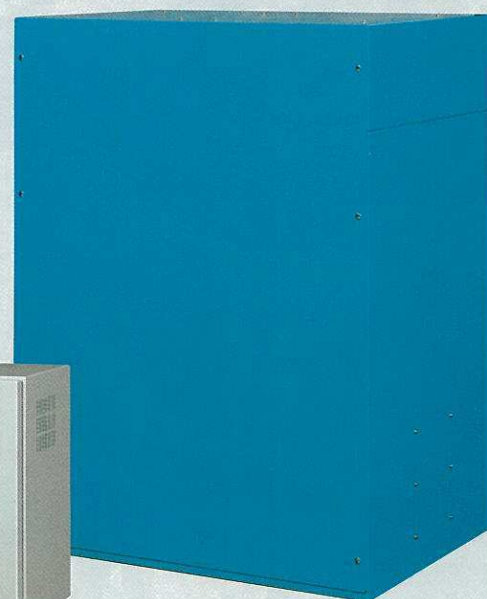




Touch Panel Automatic Register Controller

# COLORCON

DT-2050



TAIYO ELECTRIC IND. CO.,LTD.

太洋電機産業 **Taiyo**  
株式会社



# Summary of COLORCON

COLORCON is automatic register controller for process color gravure printing, and this high-precision and high-productivity machine detects the chromatic deviations by a photoelectric detector rollers to correct and control the chromatic deviations automatically.

COLORCON is indispensable for multicolor gravure printing, and TAIYO ELECTRIC INDUSTRY CO. occupies an overwhelming share as a top maker in this field in Japan.

## DT-2050

It is newest COLORCON which adopted highly efficient CPU and the touch panel.

Anyone can operate it easily by the pictorial symbol and suitable guidance.

### Features

- Clear display by the 15 inch liquid crystal display monitor.
- Operativity by the touch-panel system which stood high.
- Intelligible simple pictorial symbol.
- The oscilloscope screen which can display all printing cylinder circumferences.
- Each time prediction correction.
- Automatic setup function can be set by "one-touch" operation.  
(forward and reverse mark correspondence)
- An optimum correction quantity can be set by "one-touch" operation according to the conditions of printing materials.
- Prevention of the incorrect correction by fail-safe function.

### Specifications and Performance

- Application printer : Web-fed gravure rotary press
- Correction compensation function :
  - Length register :
  - Compensator roll correction system
  - Sidely register : (option)
  - Lateral move system using cylinders
- Detection accuracy : Length 0.01mm  
Sidely 0.02mm
- Applicable printing speed : 10 to 1000m/min
- Compensation speed :
  - Length register 1.0mm/sec (on web)
  - Sidely register 0.2 to 0.3mm/sec
- Fine adjustment range :  $\pm 9.9$ mm in each direction
- Error alarm : 0.1 to 0.9mm
- Power supply : AC200V  $\pm 10\%$  50/60Hz 1KVA
- Adaptation environment :
  - Temperature 0 to +40 °C
  - Humidity 20 to 80 % (No dew condensation)
- Mainbody and touch monitor period are to 13m.

### ● Separation type

The monitor can be separated from the main unit for effectively utilize a limited space in a printing shop.

### ● PS system (PRESET)

Since the initial register can be set precisely before printing, the paper loss can be reduced at the beginning of printing.

(The encoder and limit switch for PS are option parts.  
Those parts sometimes are prepared by the machine maker.)

### Configuration

- COLORCON Main body : 1unit
- COLORCON Monitor Box :  
1unit(2unit in case of a split type)
- Scanning head (Fe type) · Optional fiber cord · Scanning junction box(LAMP) :  
(number of channels) pcs.
- Pulse generator : 1unit(2unit in case of a split type)
- Optional functions  
Remote Panel · Register Motor

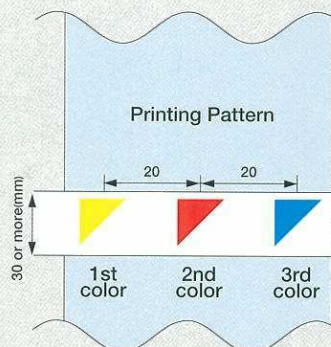
### ■ Standard Configuration



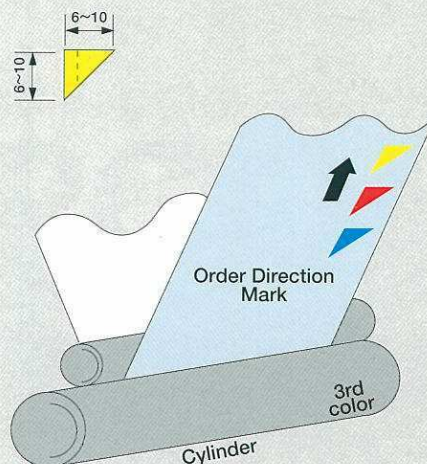
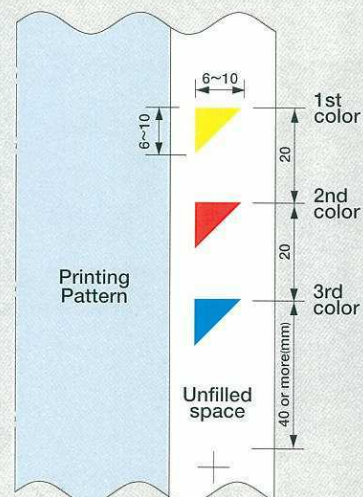


## ■ Dimensions of register mark

### ◆ Horizontal type

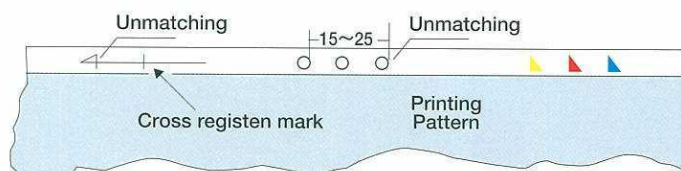


### ◆ Vertical type

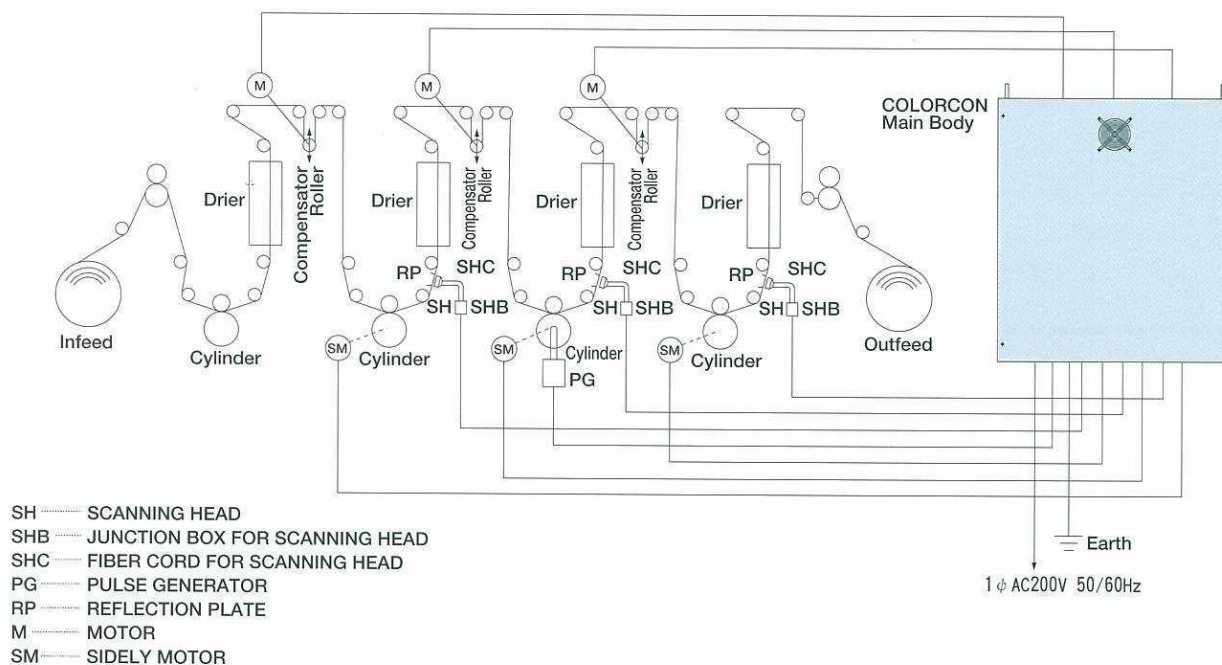


Attention :Only the register mark on the line of scanning head, at the time of the length arrangement mark, be possible automatic arrangement with operation becomes easy.

### ◆ Unsuitable Case for Automatic Set-up

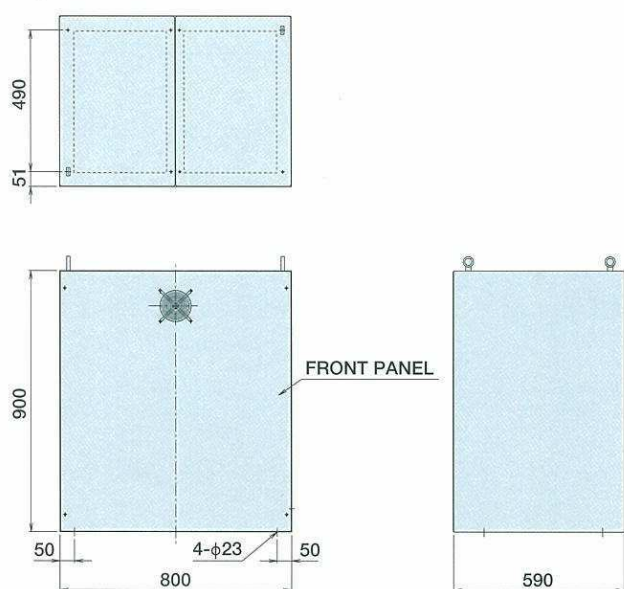


## ■ Block Diagram

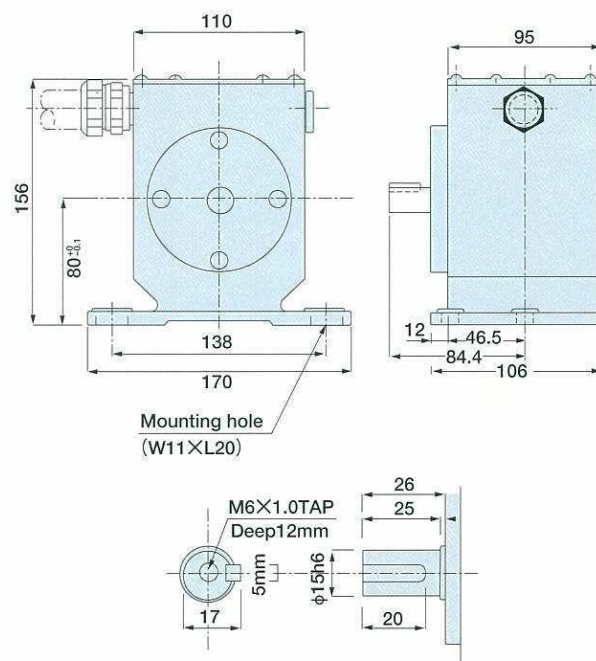




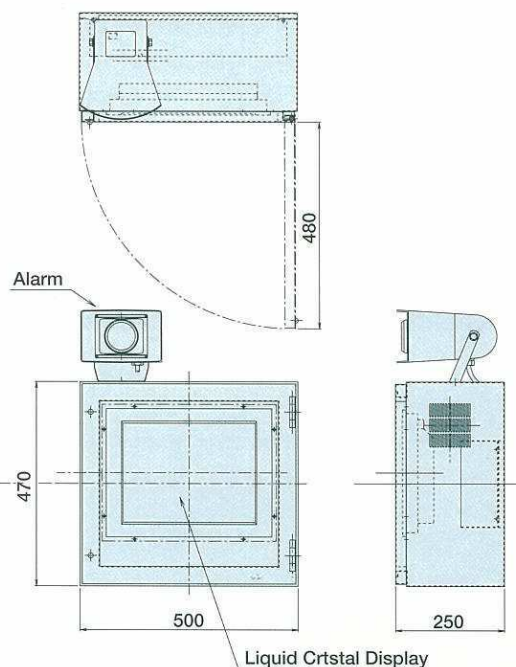
## ■ Dimensions of Machine



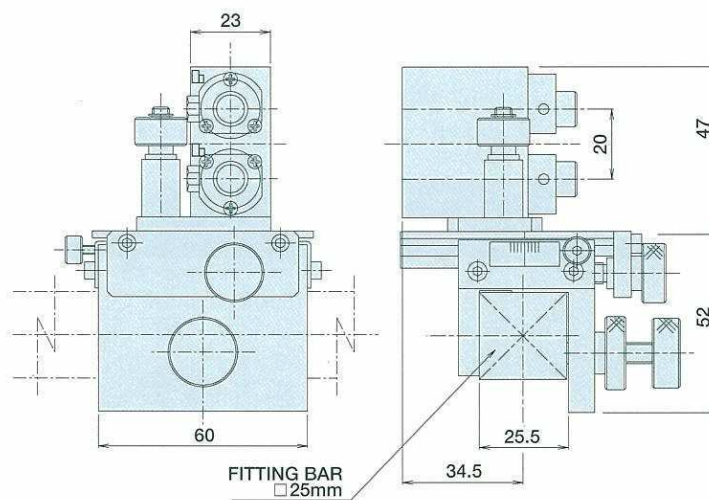
## ■ Pulse Generator PG-IV Type



## ■ Monitor Box



## ■ Scanning head



TAIYO ELECTRIC IND. CO.,LTD.

**太洋電機産業株式会社** **Taiyo**

URL <http://www.taiyo-e.co.jp/>

HEAD OFFICE : 2-51-1 Nishinippori, Arakawa-ku, Tokyo, Japan, 116-0013

Tel: 81-3-3802-7421 Fax: 81-3-3802-7424

TSUKUBA FACTORY : 29 Kasuminosato, Ami-machi, Inashiki-gun, Ibaraki, Japan, 300-0315

Tel: 81-29-889-2480 Fax: 81-29-889-2487

OSAKA SALE OFFICE : 2-1-2 Uchihirano-machi, Chuo-ku, Osaka, Japan 540-0037

Tel: 81-6-6942-5720 Fax: 81-6-6942-4677

SJD02,6,2000

The contents of catalog are subject to change without notice.